

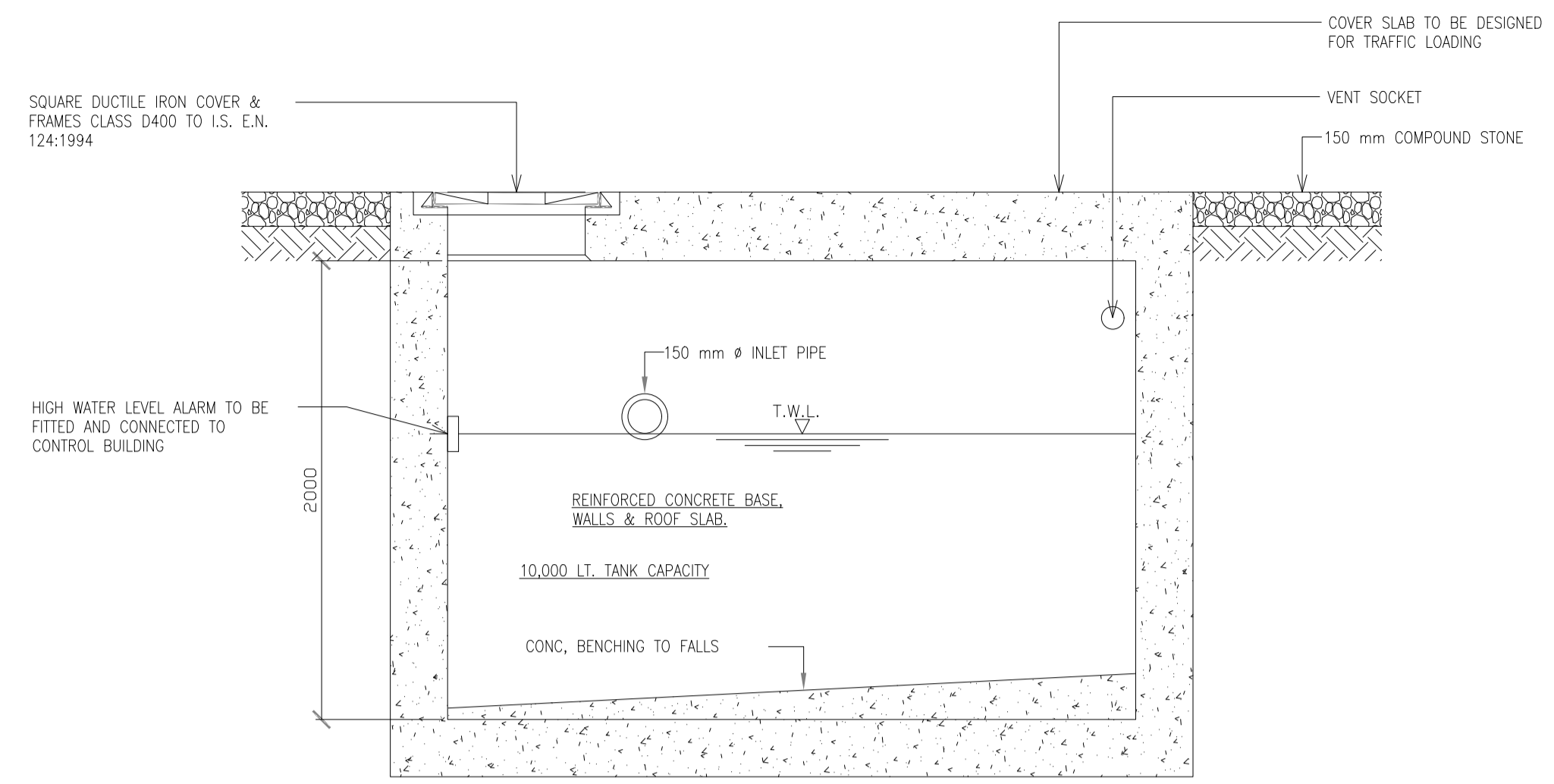
- This drawing is to be read in conjunction with relevant drawings, specifications and reports
- Dimensions are in millimetres, unless noted otherwise
- Drawings are not to be scaled use figured dimensions only

|     |            |                     |
|-----|------------|---------------------|
|     |            |                     |
|     |            |                     |
|     |            |                     |
|     |            |                     |
|     |            |                     |
|     |            |                     |
| P1  | 13.01.2023 | Issued for Planning |
| I/R | DATE       | DESCRIPTION         |

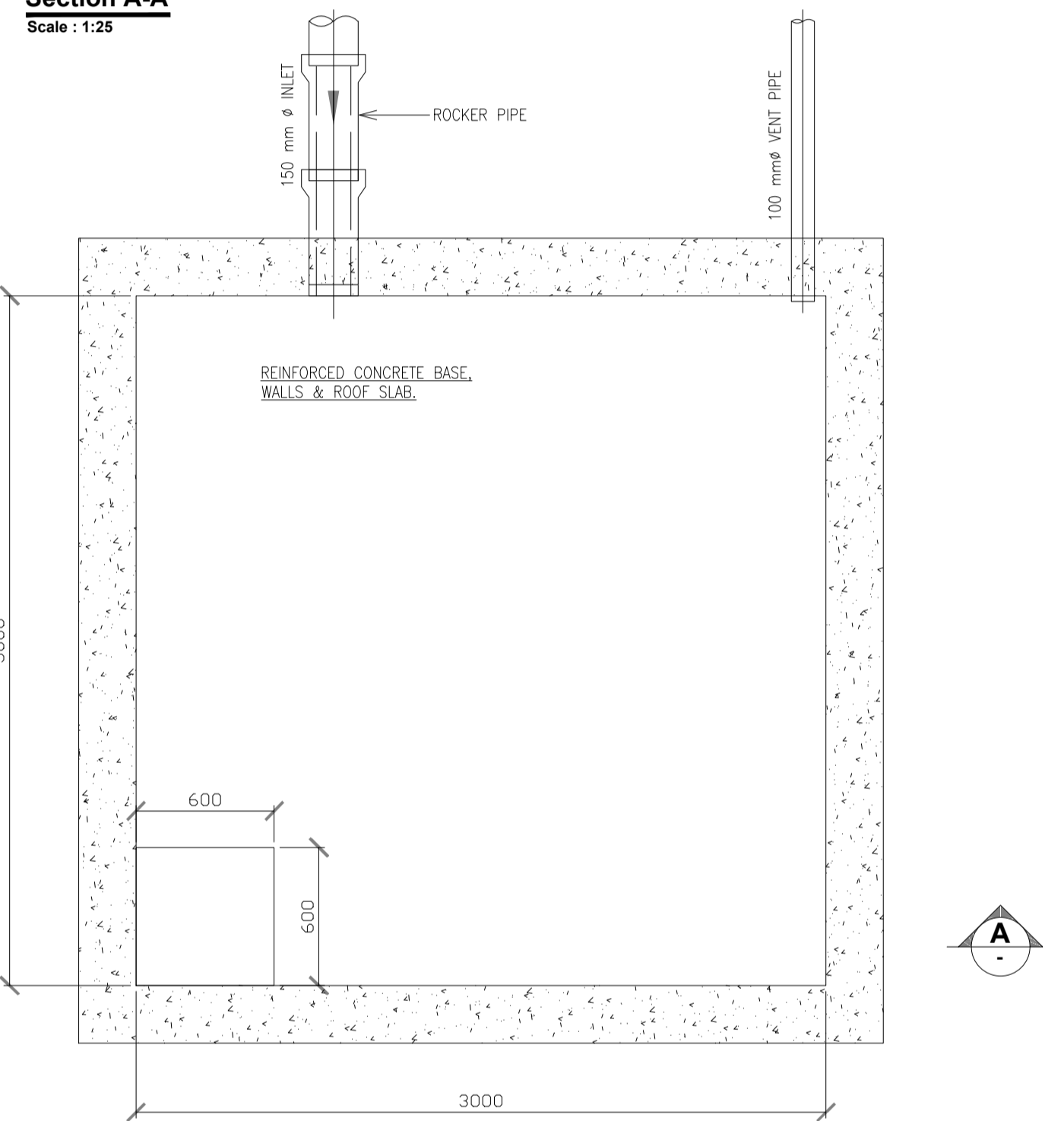
05-828

Drainage Details

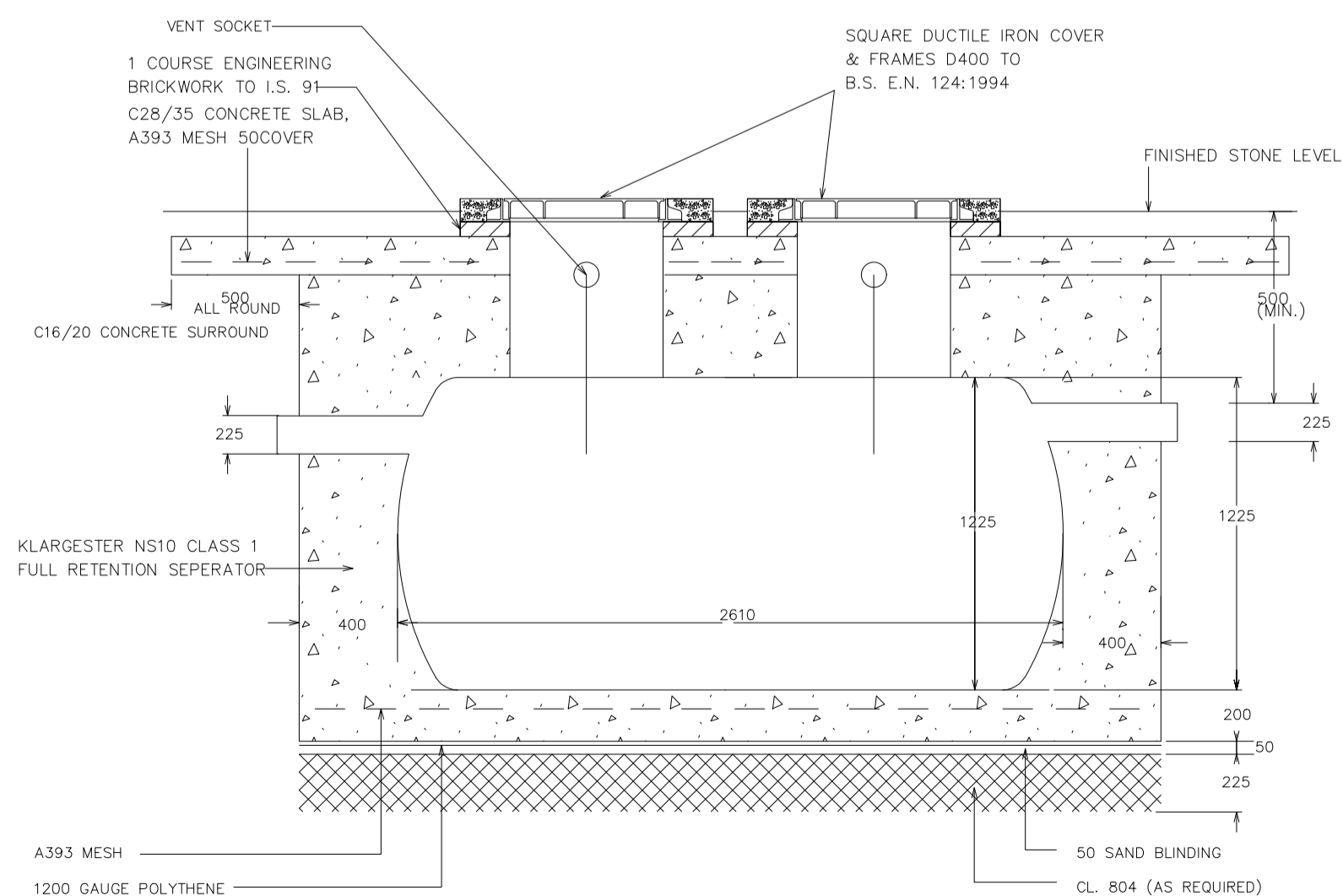
05828-DR-185



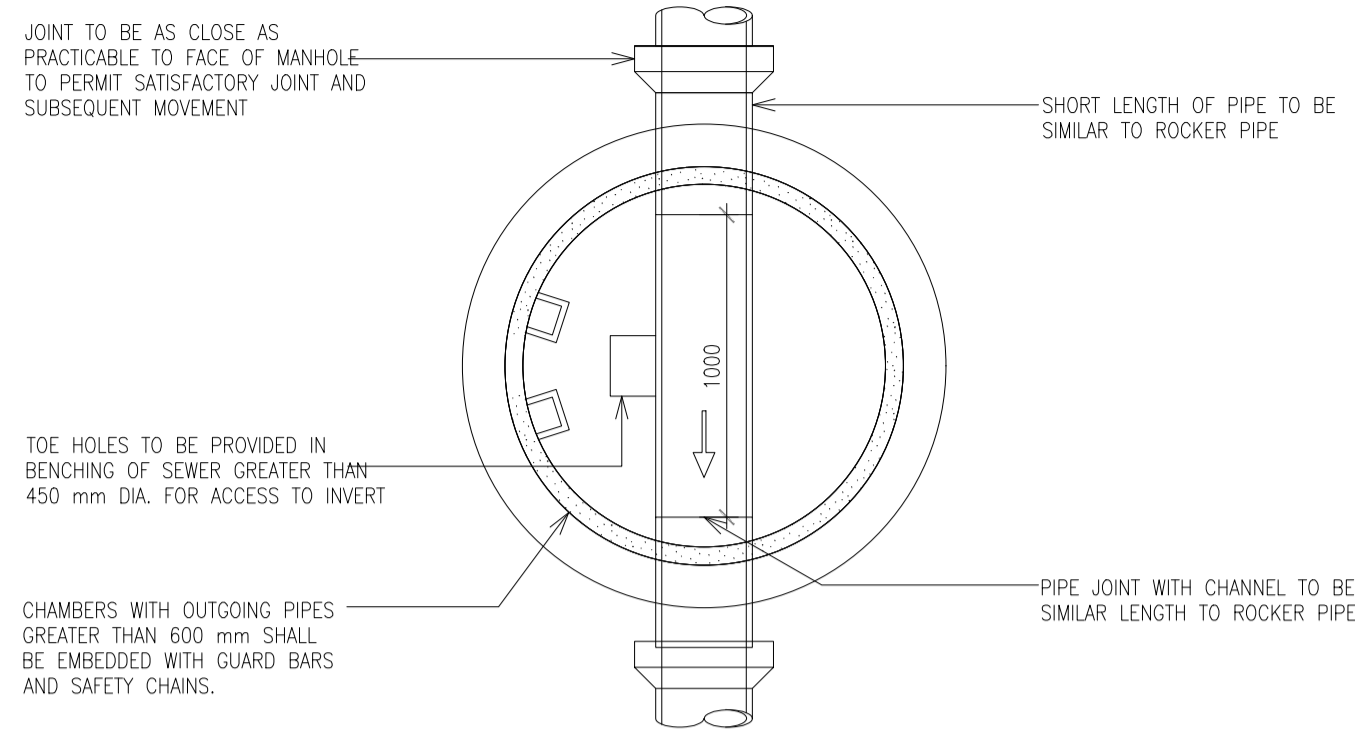
**Section A-A**  
Scale: 1:25



**Plan - Typical Foul Water Holding Tank**  
Scale: 1:25

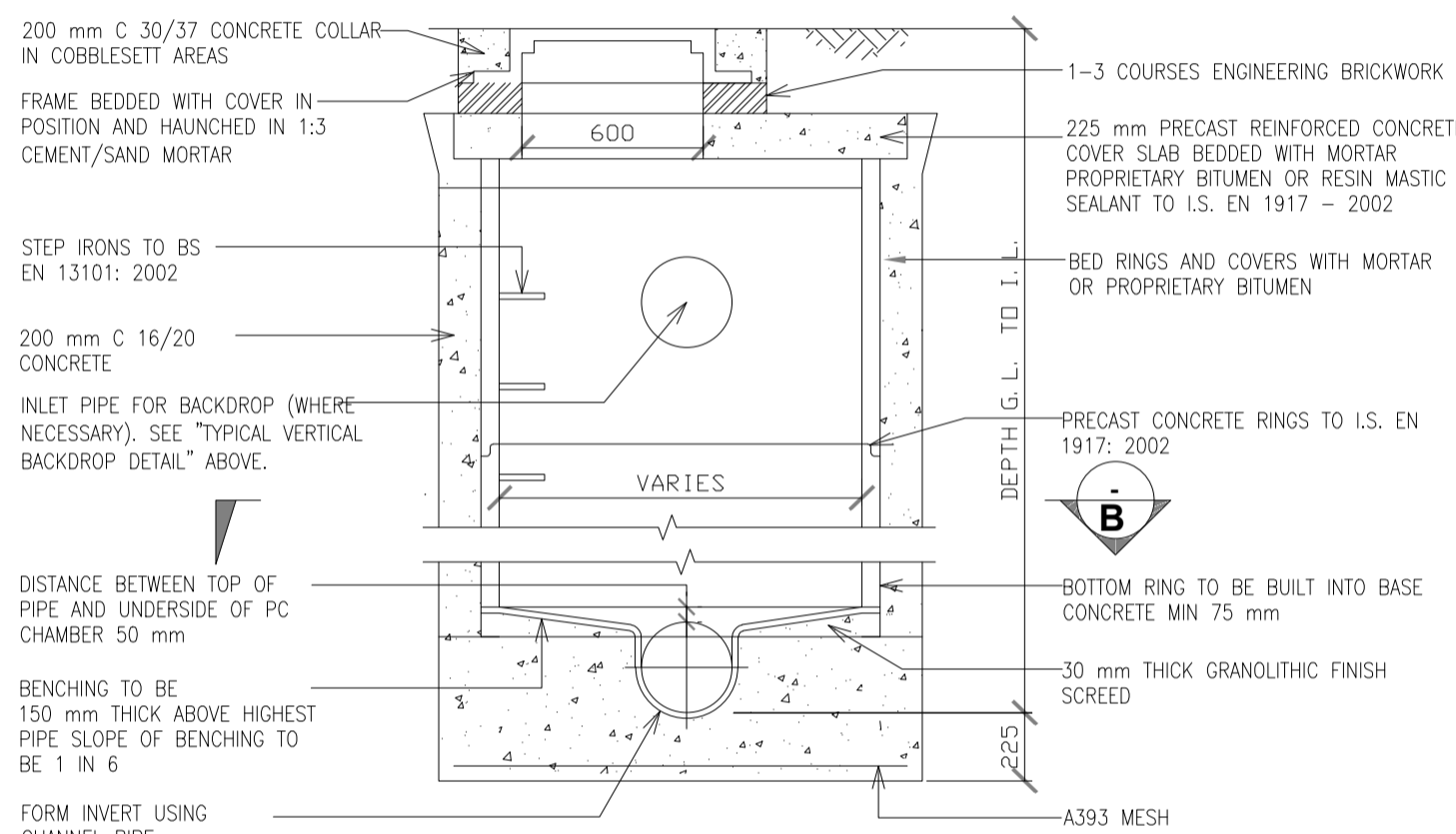


**Section Through Class 1 Full Retention Separator**  
Scale: 1:25

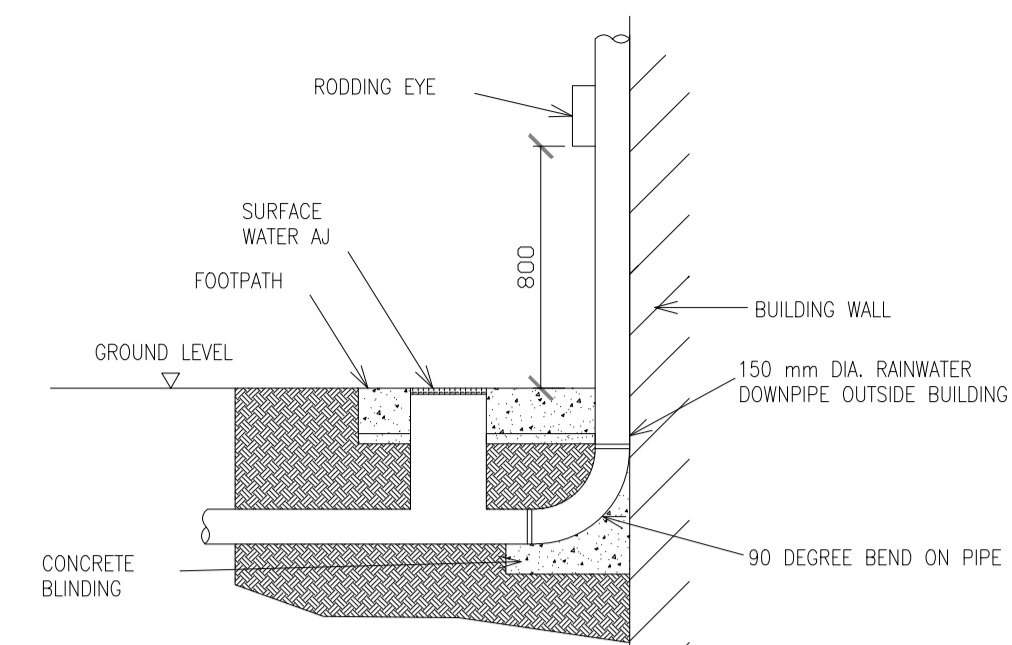


COVER AND FRAME TO BE:  
A) SQUARE DUCTILE IRON WITH 600 mm CLEAR OPENS,  
CLASS D400 TO I.S. EN 124:1994 BENEATH CARRIAGEWAYS,  
DRIVEWAYS AND FOOTWAYS.

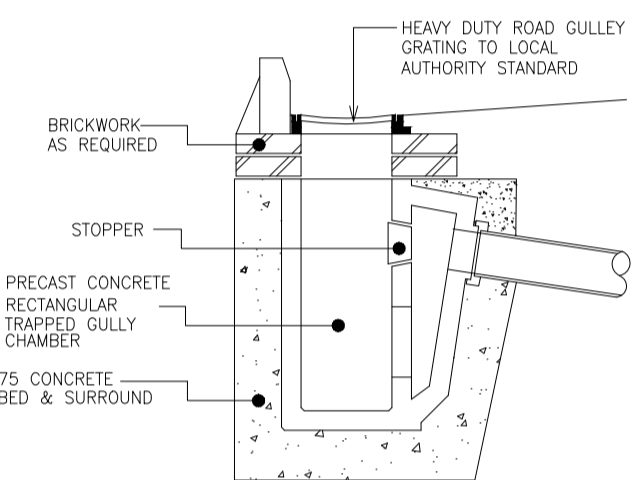
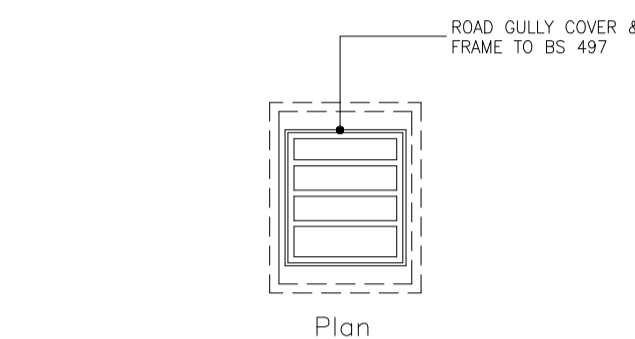
**Section B-B**  
Scale: 1:25



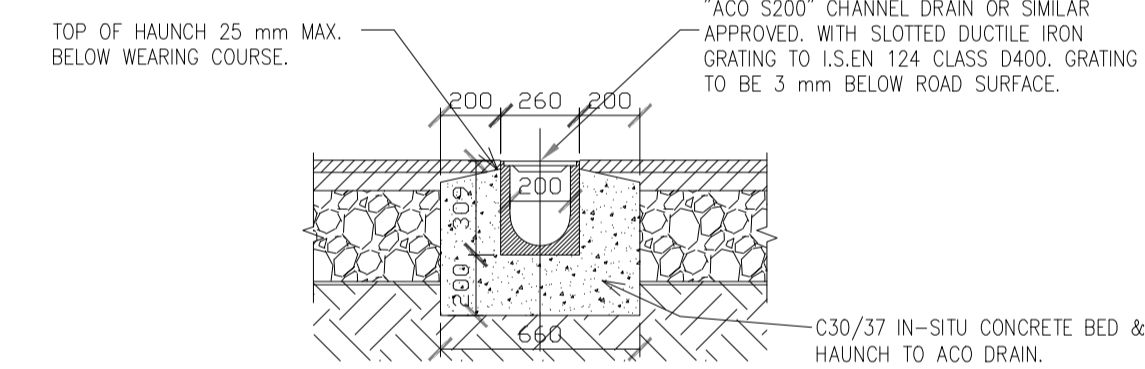
**Typical Precast Ring Manhole**  
Scale: 1:25



**Typical Rainwater Downpipe Detail**  
Scale: 1:25



**Typical Road Gully Detail**  
Scale: 1:25



**Typical Channel Drain**  
Scale: 1:25